



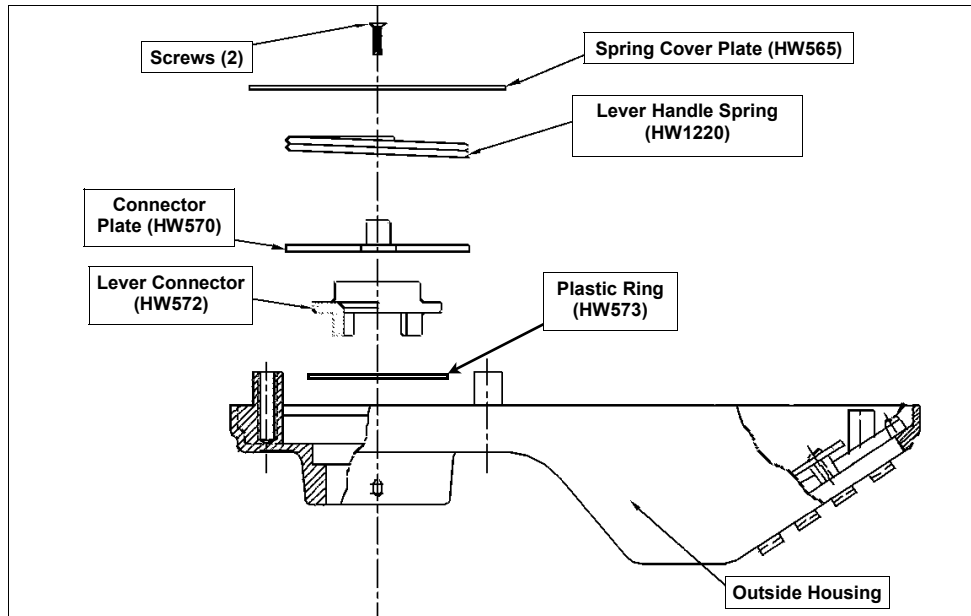
**ALARM LOCK**

345 Bayview Avenue  
Amityville, New York 11701  
For Sales and Repairs 1-800-ALA-LOCK  
For Technical Service 1-800-645-9440  
Publicly traded on NASDAQ Symbol: NSSC

© ALARM LOCK 2006

# ADDENDUM LEVER SPRING REPLACEMENT KIT

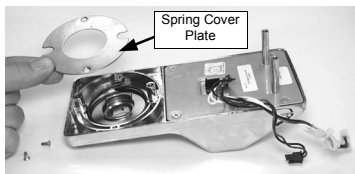
WI1368B 2/06



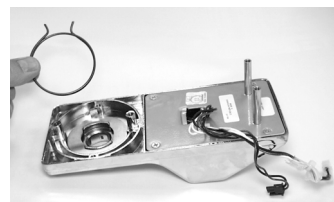
## APPLICABLE MODELS

DL2700
DL3000
PDL3000
DL4100
PDL4100
DL2800

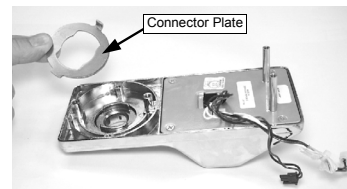
## HOW TO REPLACE THE LEVER SPRING (PART HW1220)



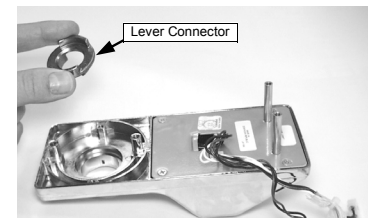
1. With outside housing removed from door, unscrew two screws and remove the Spring Cover Plate (HW565) as shown.



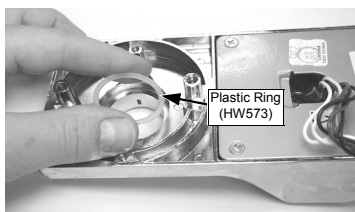
2. Remove the broken Lever Handle Spring (HW1220).



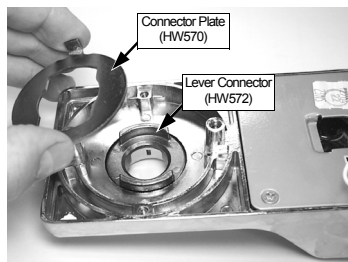
3. Remove Connector Plate (HW570).



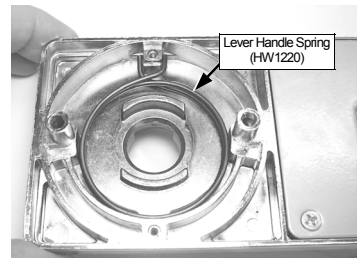
4. Remove Lever Connector (HW572). Make note of the Lever Connector finish—either gold or silver.



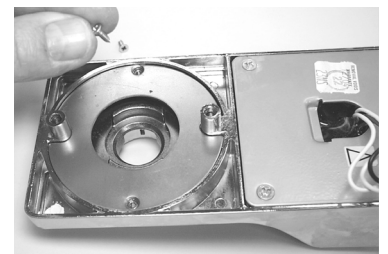
5. If Lever Connector has a **gold** finish, insert Plastic Ring (HW573). If Lever Connector has a **silver** finish, **DO NOT** insert Plastic Ring.



6. Replace Lever Connector (HW572) and Connector Plate (HW570).



7. Install new Lever Handle Spring (HW1220) in place of broken spring.



8. Replace the Spring Cover Plate (HW565) and secure with two screws.