



28460

1460 Series

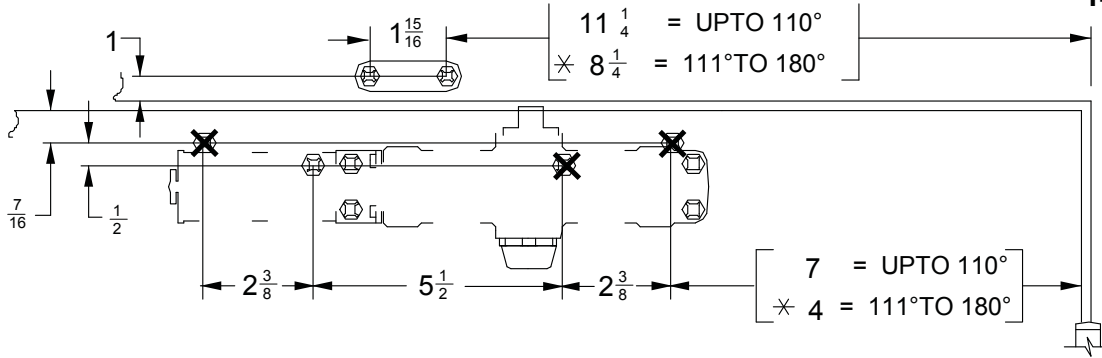


Drop Plate

Installation Instructions

1461 PULL SIDE (DOOR MOUNT) DROP PLATES

Pull side Arm Mounted On:
1461-18 Drop Plate
1461-18FC Drop Plate
1461-18DS1 Drop Plate



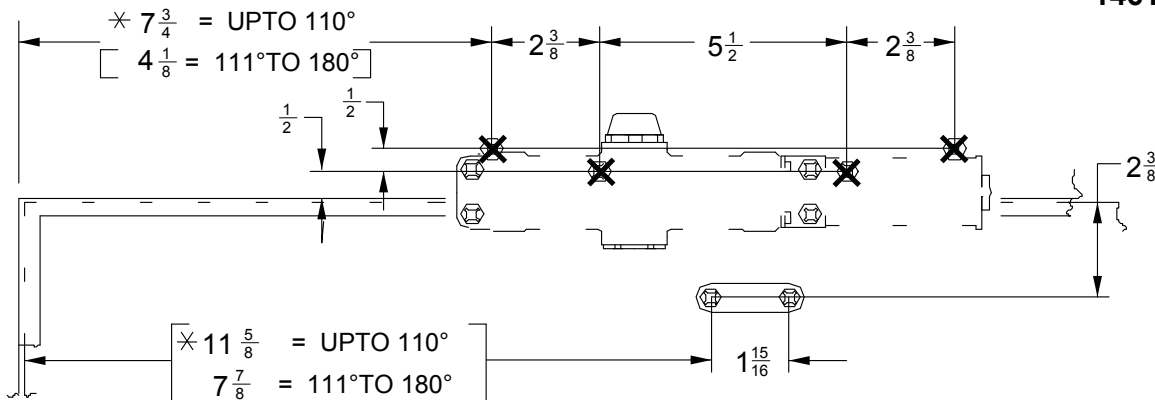
Left Hand Door Shown
Right Hand Door Opposite

NOTES-

1. MINIMUM TOP RAIL WIDTH IS $1\frac{1}{2}$ ".
- * 2. TRIM, FRAME, AND HINGE PERMITTING

1461 PUSH SIDE (TOP JAMB) DROP PLATES

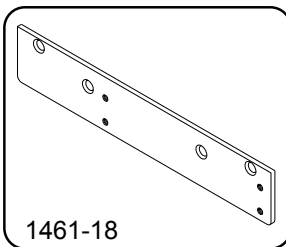
Push Side Arm Mounted On:
1461-18 Drop Plate



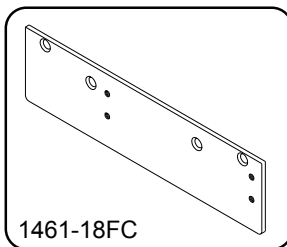
Left Hand Door Shown
Right Hand Door Opposite

NOTES-

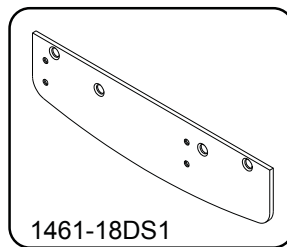
1. MINIMUM FRAME FACE OF $1\frac{1}{4}$ " REQUIRED.
- * 2. INCREASE THIS DIMENSION $1\frac{1}{2}$ " FOR DELAYED ACTION WHEN DOOR CAN ONLY OPEN 90°.



1461-18



1461-18FC



1461-18DS1

INCH	$\frac{7}{16}$	$\frac{1}{2}$	1	$1\frac{1}{4}$	$1\frac{1}{2}$	$1\frac{15}{16}$	$2\frac{3}{8}$	$2\frac{3}{4}$	4
M. M.	11	13	25	32	38	49	60	70	102
INCH	$4\frac{1}{8}$	$5\frac{1}{2}$	7	$7\frac{3}{4}$	$7\frac{7}{8}$	$8\frac{1}{4}$	$11\frac{1}{4}$	$11\frac{5}{8}$	$12\frac{3}{4}$
M. M.	105	140	178	197	200	210	286	295	324

General Notes:

1. On Top Jamb & Hinge Face Mounts. Locate Closer & Shoe From \bar{C} Of Pivot or Swing Clear Hinge Pin When Used.
2. On Top Jamb Mounting When Overhead Stop is Used, Shoe Must Be Lowered To Clear Holder.
3. For 180° Opening On Hinge Face Mounts, Max Buttsizes Is 5" X 5"
4. Reinforcing Per ANSI/SDI-100 Recommended For Hollow Metal Doors and Frames.
5. Closer Size Is $12\frac{3}{4}$ x $2\frac{3}{4}$ x $2\frac{3}{8}$

Customer Service

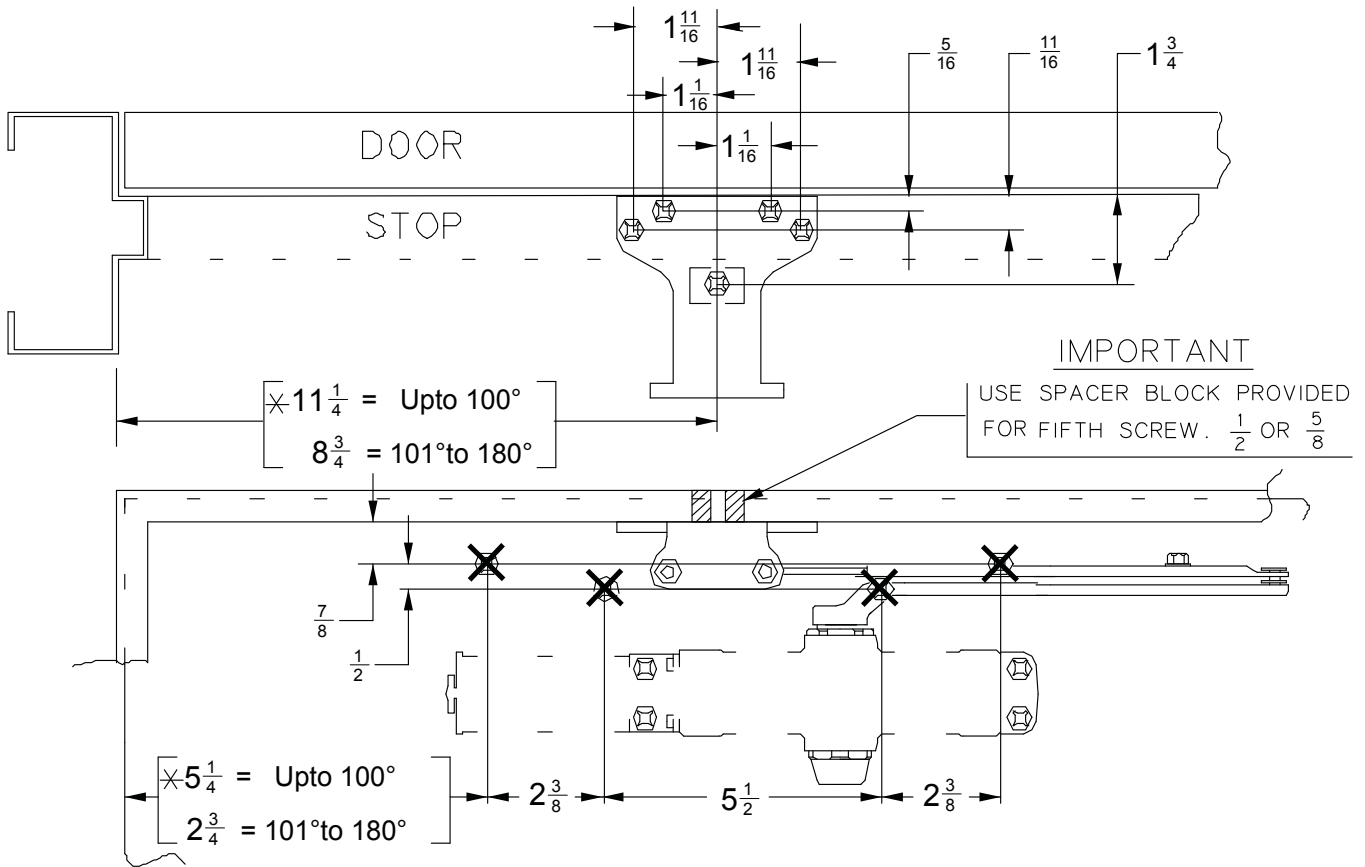
1-877-671-7011

www.allegion.com

P1461 Push Side (Door Mount) Drop Plates

Push Side Parellel Arm Mounted On:

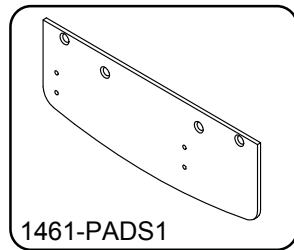
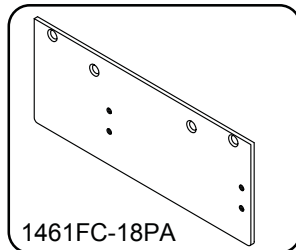
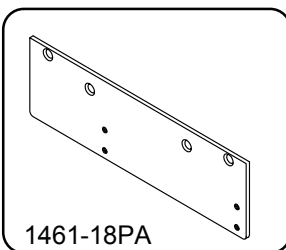
- 1461-18PA Drop Plate**
- 1461FC-18PA Drop Plate**
- 1461-PADS1 Drop Plate**



Left Hand Door Shown
Right Hand Door Opposite

NOTES -

1. MINIMUM TOP RAIL WIDTH IS 2 1/4".
- * 2. INCREASE THIS DIMENSION 1 1/2" FOR DELAYED ACTION WHEN DOOR CAN ONLY OPEN 90°.



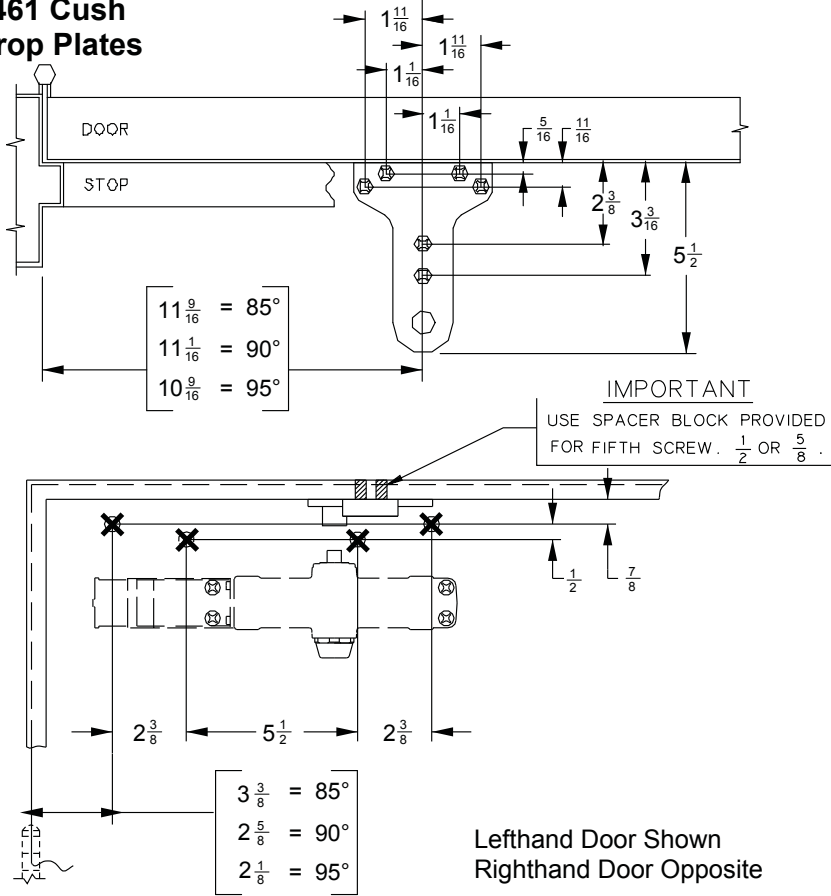
INCH	5/16	1/2	11/16	7/8	1 1/16	1 11/16	1 3/4	2 3/8	2 3/4
M.M.	8	13	17	22	27	43	44	60	70

INCH	3 1/2	5 1/4	5 1/2	8 3/4	11 1/2	12 3/4
M.M.	89	133	140	222	292	324

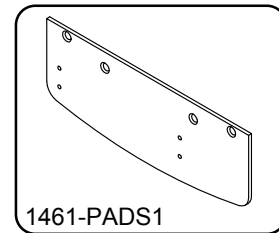
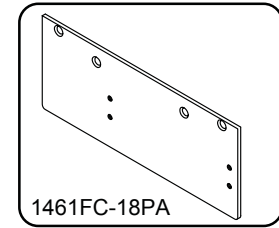
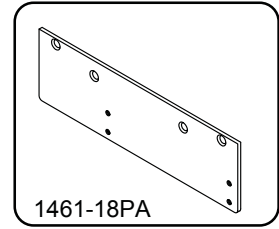
General Notes:

1. On Top Jamb & Hinge Face Mounts. Locate Closer & Shoe From ϕ Of Pivot Or Swing Clear Hinge Pin When Used.
2. On Top Jamb Mounting When Overhead Stop Is Used, Shoe Must Be Lowered To Clear Holder.
3. For 180° Opening On P1460, Max Butt Size Is 5" X 5", Max. Reveal For P1460 Mount Is 3 1/2.
4. Reinforcing Per ANSI/SDI-100 Recommended For Hollow Metal Doors And Frames.
5. Closer Size Is 12 3/4 X 2 3/4 X 2 3/8

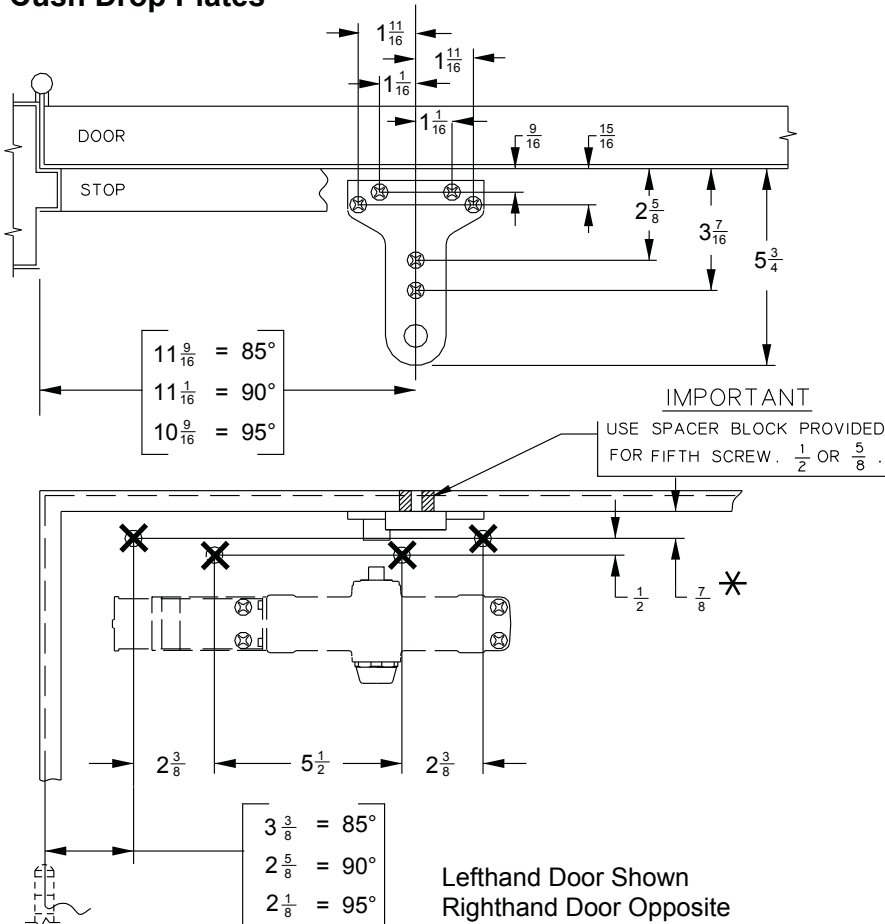
1461 Cush Drop Plates



Push Side, Parellelarm Mounted On: 1461-18PA Drop Plate 1461FC-18PA Drop Plate 1461-PADS1 Drop Plate



Push Side, Parallel Arm Mounted For Spring Cush Drop Plates



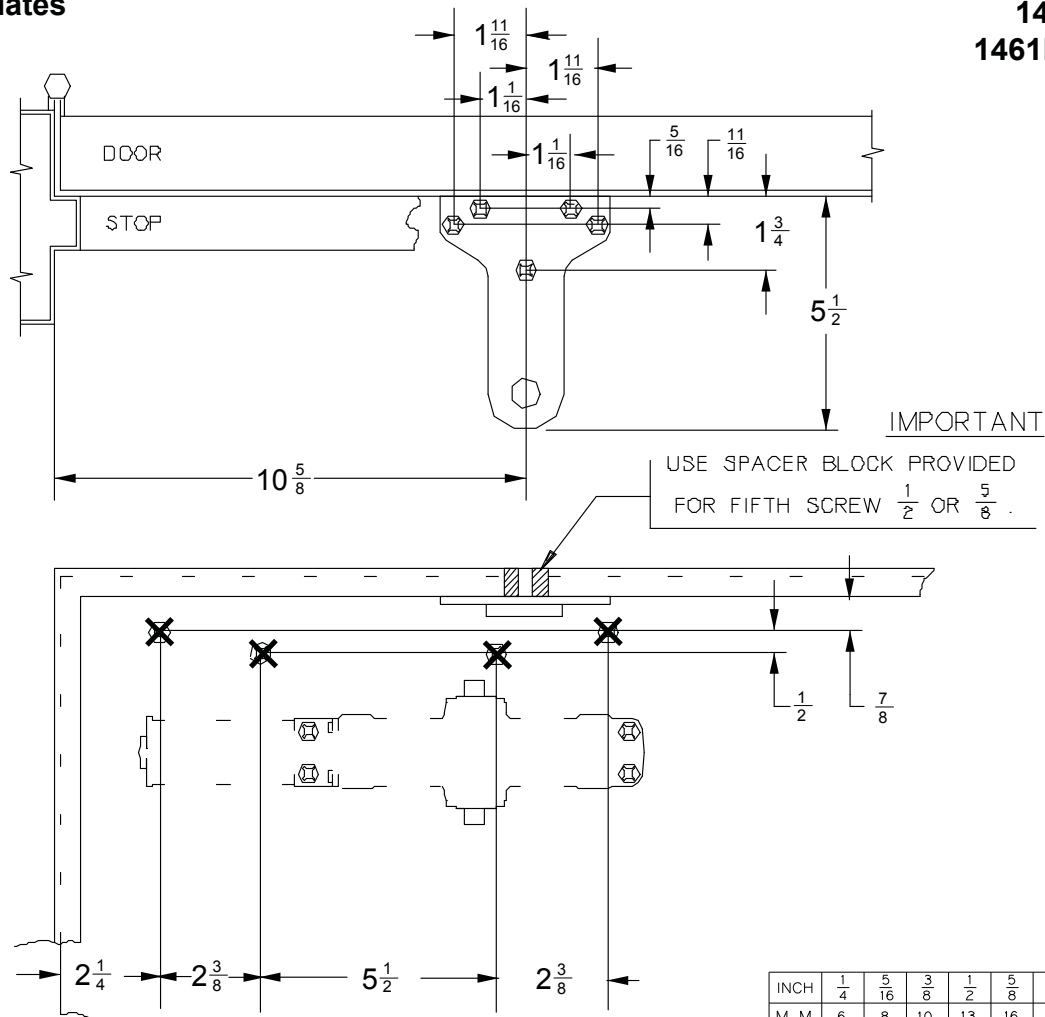
INCH	$\frac{1}{4}$	$\frac{5}{16}$	$\frac{3}{8}$	$\frac{1}{2}$	$\frac{5}{8}$	$\frac{11}{16}$	$\frac{7}{8}$	1	$1 \frac{1}{16}$	$1 \frac{1}{2}$	$1 \frac{5}{8}$
M. M.	6	8	10	13	16	18	22	25	27	38	41
INCH	$1 \frac{11}{16}$	2	$2 \frac{3}{8}$	$2 \frac{5}{8}$	$2 \frac{3}{4}$	$2 \frac{7}{8}$	$3 \frac{3}{16}$	$3 \frac{3}{8}$	$4 \frac{3}{4}$	$4 \frac{7}{8}$	$5 \frac{1}{2}$
M. M.	43	51	60	66	70	73	81	86	120	123	139
INCH	$5 \frac{7}{8}$	$6 \frac{5}{8}$	$7 \frac{1}{2}$	$10 \frac{1}{16}$	$11 \frac{1}{16}$	$11 \frac{9}{16}$	$12 \frac{1}{4}$				
M. M.	149	168	190	255	281	293	311				

General Notes:

1. If door is hung on pivots
Locate closer and shoe from ϕ of pivot point.
 2. Closer size $12 \frac{1}{4} \times 2 \frac{3}{4} \times 2 \frac{3}{8}$.
 3. Top rail less than $4 \frac{3}{4}$
Requires drop plate.
 4. All dimensions applicable
For hold open or dead stop.
 5. Delayed action optional.
 6. Reinforcing per. ANSI/SDI-100
Recommended for hollow
Metal door and frames.
 7. $\frac{5}{8}$ maximum allowable side
Stop.
 8. Using fasters provided
Mount drop plate with
(4) $\frac{1}{4}$ - 14 x $1 \frac{3}{8}$ S.R.T.
Mount closer to drop plates
(4) $\frac{1}{4}$ - 20 x $\frac{1}{2}$ P.H.M.S.
- * Increase this dimension to $\frac{15}{16}$ for spring cush FC

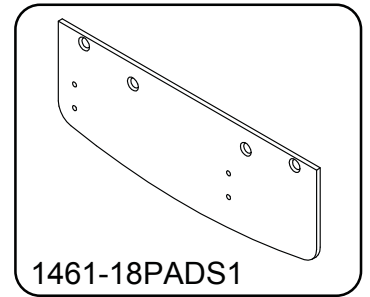
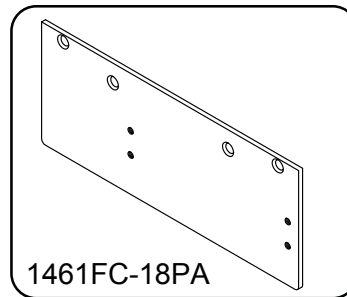
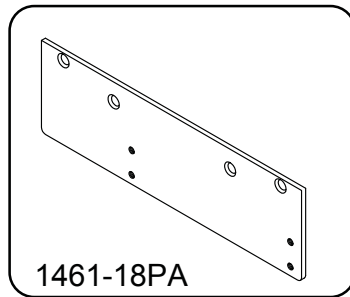
**1461 EDA
Drop Plates**

**Push Side, Parellel Arm Mounted On:
1461-18PA Drop Plate
1461FC-18PA Drop Plate
1461-PADS1**



Left Hand Door Shown
Right Hand Door Opposite

INCH	1/4	5/16	3/8	1/2	5/8	11/16	7/8	1	1 1/16	1 1/2	1 5/8
M.M.	6	8	10	13	16	18	22	25	27	38	41
INCH	1 11/16	2	2 3/8	2 5/8	2 3/4	2 7/8	3 3/16	3 3/8	4 3/4	4 7/8	5 1/2
M.M.	43	51	60	66	70	73	81	86	120	123	139
INCH	5 7/8	6 5/8	7 1/2	10 1/16	11 1/16	11 9/16	12 1/4				
M.M.	149	168	190	255	281	293	311				



General Notes:

1. If door is hung on pivots locate closer and shoe from c of pivot point. (consult factory if using swing clear hinges.)
2. Closer size 12 1/4 x 2 3/4 x 2 3/8.
3. Top rail less than 4 3/4 requires drop plate.
4. All dimensions applicable for hold open.
5. Delayed action optional.
6. Reinforcing per ANSI/SDI-100 recommended for hollow metal door and frames.
7. 5/8 maximum allowable side stop.
8. Using fasters provided mount drop plate with (4) 1/4 - 14 x 1 3/8 S.R.T. mount closer to drop plates with (4) 1/4 - 20 x 1/2 p.H.M.S. Max. Butt hinge size 5 x 5.

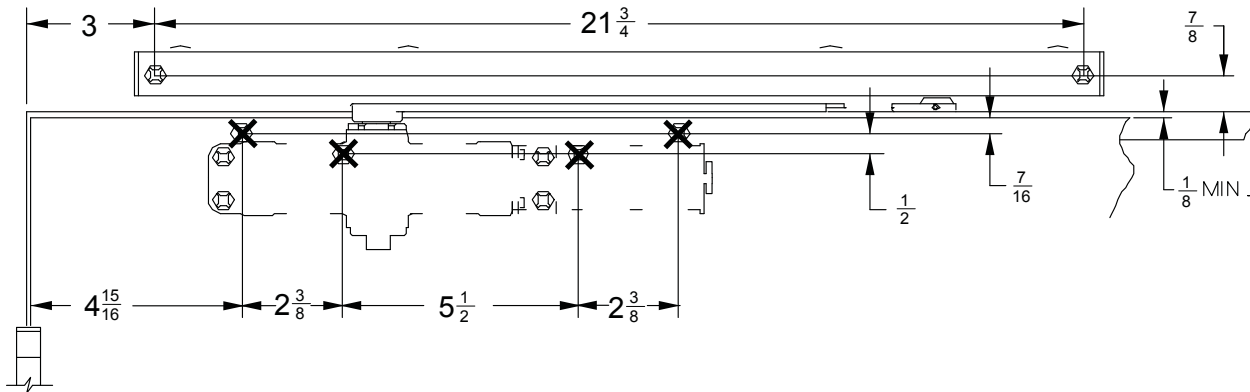
1460T/1461T Pull Side (Door Mount) Drop Plates

Pull Side Arm Mounted On:

1461-18 Drop Plate

1461-18FC Drop Plate

1461-18DS1 Drop Plate



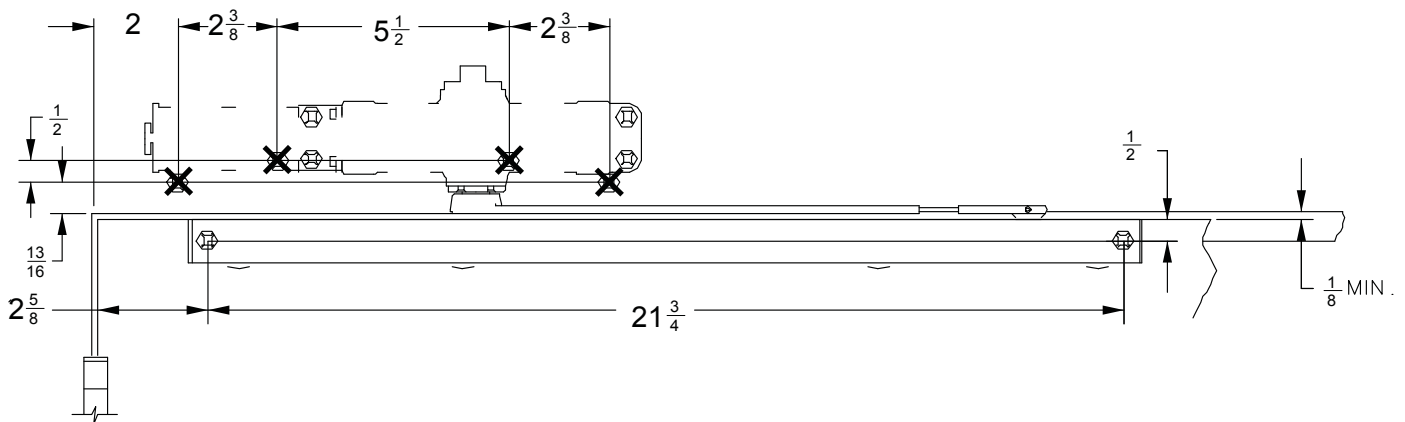
Right Hand Door Shown
Left Hand Door Opposite

1461 Pull Side (Top Jamb) Drop Plates

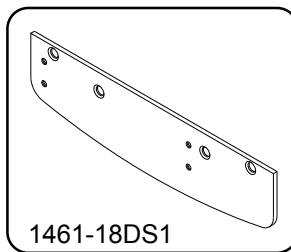
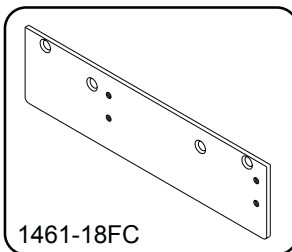
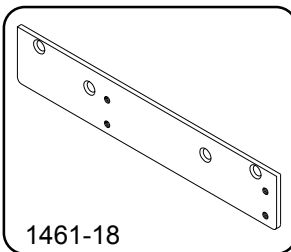
Push Side Arm Mounted On:

1461-18 Drop Plate

1461-18FC Drop Plate



Right Hand Door Shown
Left Hand Door Opposite



INCH	1/8	7/16	1/2	13/16	7/8	1	2 3/8	2 5/8	2 3/4
M.M.	3	11	13	21	22	51	60	67	70

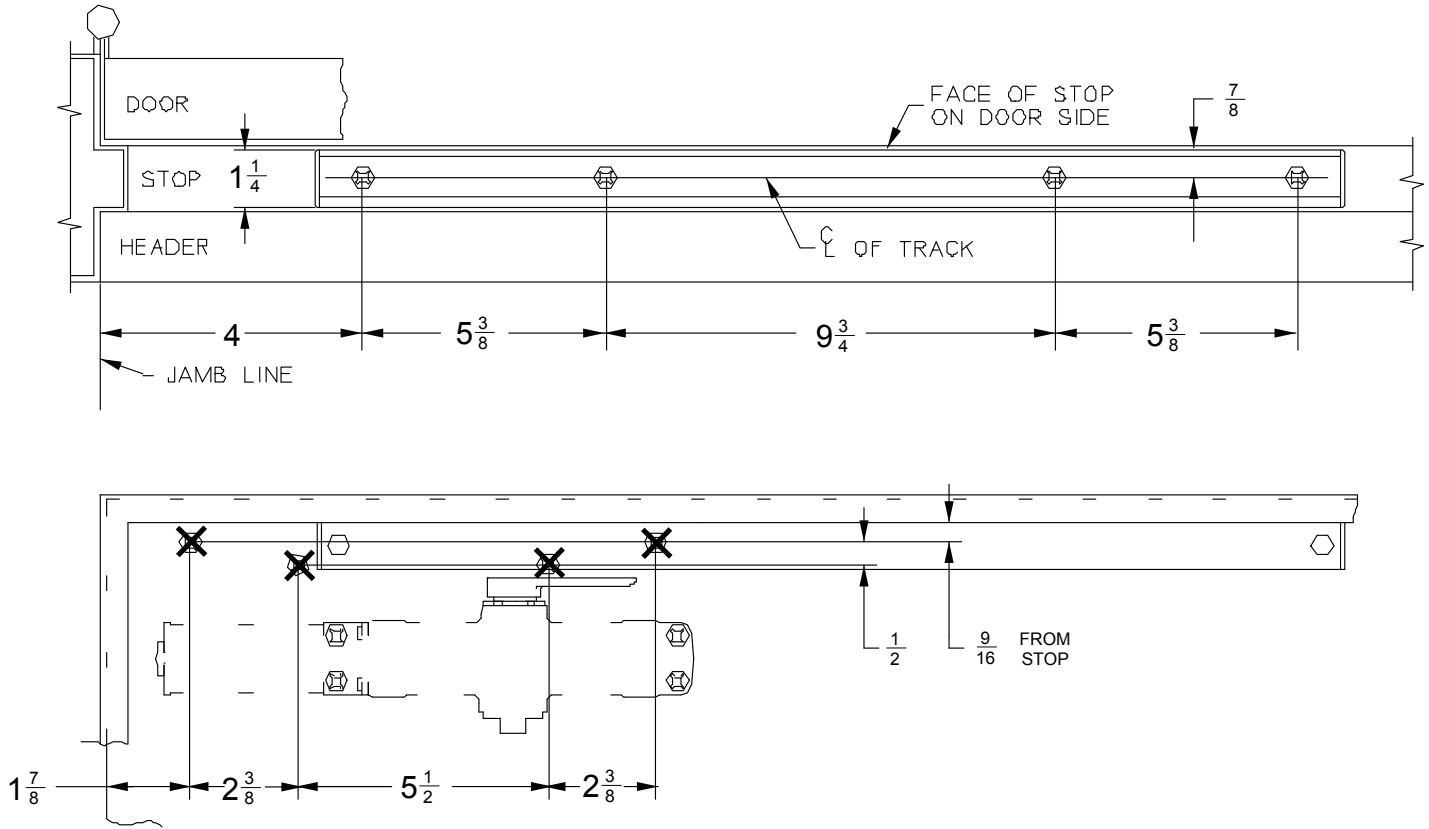
INCH	3	4 15/16	5 1/2	12 3/4	21 3/4
M.M.	76	125	140	324	552

General Notes:

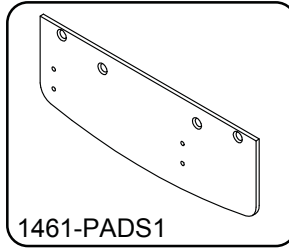
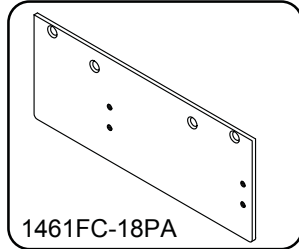
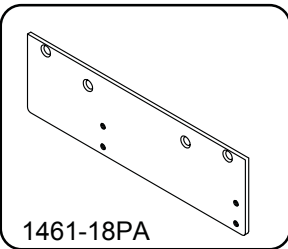
1. Locate closer & track from C of pivot or swing clear hinge pin when used.
2. If butt, frame and wall conditions permit. Pull side mountings allow 180° of opening.
3. Optional hold-open available. Adjustable from 85° - 100°.
4. Reinforcing per ANSI/SDI-100 recommended for hollow metal doors and frames.
5. Closer size is 12 3/4 x 2 3/4 x 2 3/8
6. Delay action optional.

**1460T/1461T Push Side (Door Mount)
Drop Plates**

**Push Side Parellel Arm Mounted On:
1461-18PA Drop Plate
1461FC-18PA Drop Plate
1461-PADS1 Drop Plate**



Left Hand Door Shown
Right Hand Door Opposite

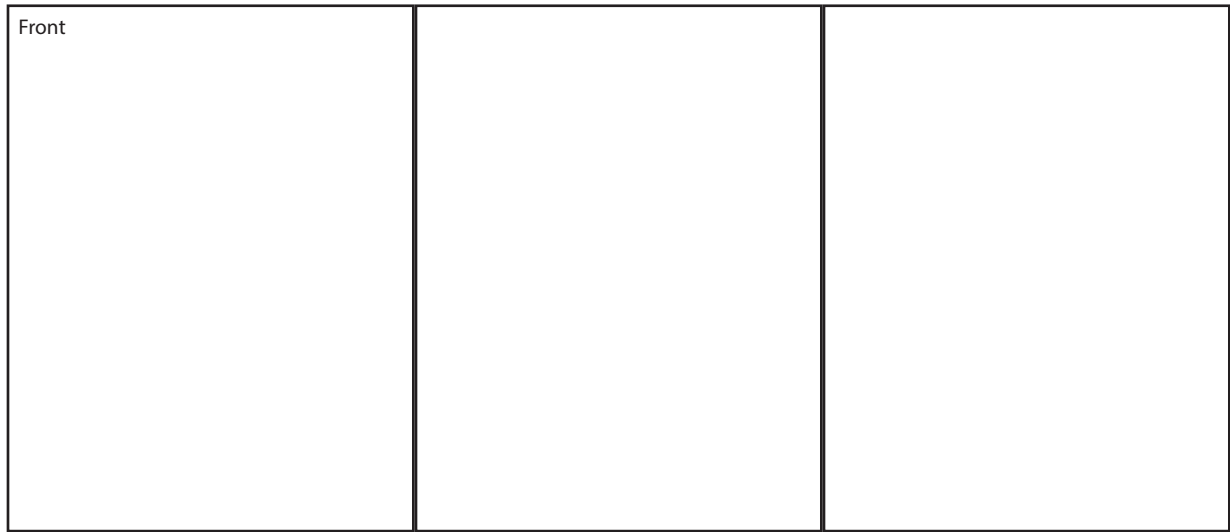


INCH	$\frac{1}{2}$	$\frac{9}{16}$	$\frac{7}{8}$	$1\frac{1}{4}$	$1\frac{7}{8}$	$2\frac{3}{8}$	$2\frac{3}{4}$
M.M.	13	14	22	32	44	60	70
INCH	4	$5\frac{3}{8}$	$5\frac{1}{2}$	$9\frac{3}{4}$	$12\frac{3}{4}$		
M.M.	102	137	140	248	324		

General notes:

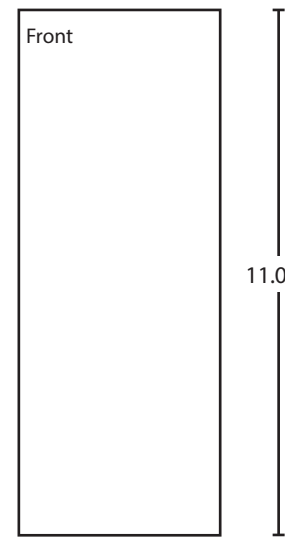
1. Locate closer & track from C of pivot or swing clear hinge pin when used.
2. If butt, frame and wall conditions permit. Pull side mountings allow 180° of opening.
3. Optional hold-open available. Adjustable from 85° - 100°.
4. Reinforcing per ANSI/SDI-100 recommended for hollow metal doors and frames.
5. Closer size is $12\frac{3}{4} \times 2\frac{3}{4} \times 2\frac{3}{8}$
6. Delay action optional.

25.500



BEGINNING SHEET

4.25



FOLDED SHEET

Additional Notes:
1. None

Revision History						Revision Description: A > Revised Artwork			
C	D	E	F	G	H				
042801									
Material White Paper						Edited By	Approved By	EC Number	Release Date
						D. Myers	M. Sasso	042801	01-01-14
Notes 1. printed two sides 2. printed black 3. tolerance ± .13 4. printed in country may vary 5. drawings not to scale						Title 1461 Drop Plate Installation Instructions			
						Creation Date 09-21-11	Number 28460		Revision C
						Created By N/A	Activity 3899 Hancock Expwy Security, CO 80911		© Allegion 2014
						Software: InDesign CS6			