

LZR-I30/S600 PARAMETERS

OF ACTIVE DETECTION CURTAINS



CURTAIN C1 C2 C3 C4

- 0 CURTAIN IS INACTIVE ON BOTH FIELDS
- 1 CURTAIN IS ACTIVE ON OPTIONAL FIELD
- 2 CURTAIN IS ACTIVE ON SAFETY FIELD
- 9 CURTAIN IS ACTIVE ON BOTH FIELDS

EXAMPLE CONFIGURATIONS



C1 + C2 ARE ACTIVE ON SAFETY FIELD
C3 + C4 ARE ACTIVE ON OPTIONAL FIELD



C1 IS ACTIVE ON BOTH FIELDS
C2 + C3 ARE ACTIVE ON SAFETY FIELD
C4 IS INACTIVE



ALL CURTAINS ARE ACTIVE ON BOTH FIELDS

The distances between the curtains depends on the mounting height and side.
When mounted on the left, the distance between curtain C1 and curtain C4 is approximately 4 in. for every 3 ft (mounting height).
EXAMPLE: At 15 ft. mounting height, the distance between C1 and C4 is 20 in.

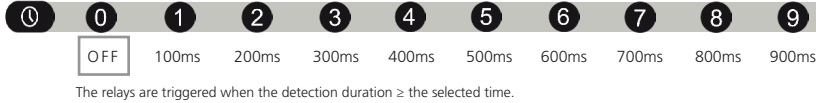
MOUNTING SIDE



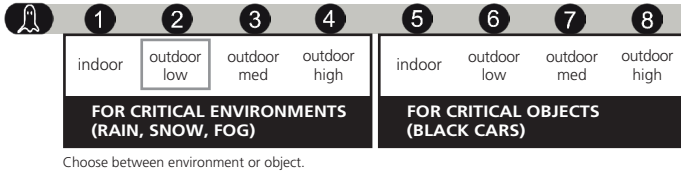
UNCOVERED ZONE



OUTPUT ACTIVATION DELAY



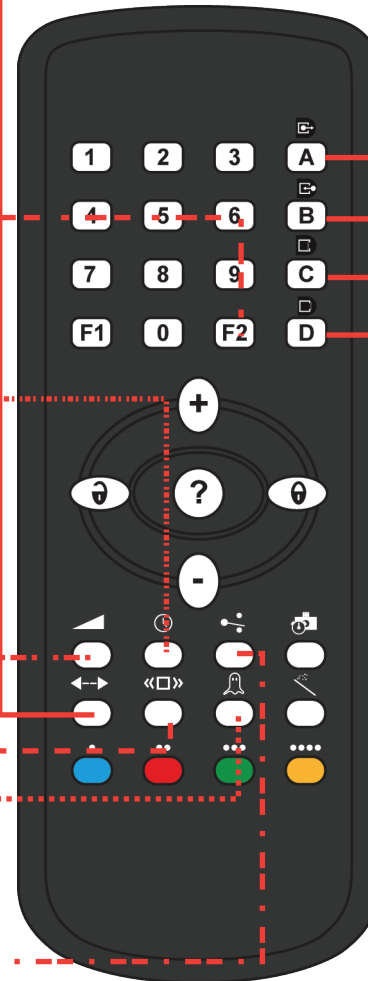
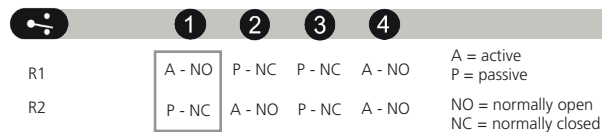
IMMUNITY FILTER



MINIMUM OBJECT SIZE



OUTPUT CONFIGURATION



UNIVERSAL REMOTE CONTROL TIPS

- TO CHANGE OR QUESTION A PARAMETER, START BY PRESSING THE **UNLOCK** AND FINISH THE SESSION BY PRESSING **LOCK**
- TO QUESTION A PARAMETER, PRESS **?** AFTER UNLOCKING AND CHOOSING A PARAMETER. COUNT THE LED FLASHES.
- CONSIDER USING AN ACCESS CODE
TO SET AN ACCESS CODE: **UNLOCK LOCK 0-9 0-9 0-9 0-9 LOCK LOCK**
TO DELETE AN ACCESS CODE: **UNLOCK 0-9 0-9 0-9 0-9 LOCK 0 LOCK**
- VIRTUAL PUSH PLATE: **UNLOCK 2**
- FACTORY DEFAULTS: **UNLOCK 9**
- ALWAYS FINISH AN ADJUSTMENT SESSION BY LAUNCHING A SETUP: **UNLOCK 1**
- TO TURN THE LEDS ON/OFF: **UNLOCK 4**
- FOR VISIBLE LASER BEAMS: **UNLOCK 3**

- A** OPTIONAL FIELD WIDTH
- B** OPTIONAL FIELD HEIGHT
- C** SAFETY FIELD WIDTH
- D** SAFETY FIELD HEIGHT

LZR TIPS

- THE LZR-I30 REQUIRES 10-35 V CLEAN DC POWER (NON-RECTIFIED)
- AFTER 30 MINUTES, THE SENSOR LOCKS ACCESS TO THE REMOTE CONTROL SESSION. POWER CYCLE THE SENSOR TO RECONFIGURE.
- A BEA UNIVERSAL REMOTE IS REQUIRED TO CONFIGURE THE LZR-I30.



MICROWAVE PARAMETERS



SENSITIVITY



ACTIVATION RELAY HOLD TIME



DETECTION MODE



REJECTION MODE



☐ NOTES FACTORY DEFAULTS

- 1: DETECTION OF ALL KINDS OF TARGETS IN MOTION
- 2: DETECTION OF ALL KINDS OF TARGETS IN MOTION + INTERFERENCE IMMUNITY
- 3: LOW 'PEDESTRIAN/PARALLEL TRAFFIC' REJECTION + INTERFERENCE IMMUNITY
- 4: MEDIUM 'PEDESTRIAN/PARALLEL TRAFFIC' REJECTION + INTERFERENCE IMMUNITY
- 5: HIGH 'PEDESTRIAN/PARALLEL TRAFFIC' REJECTION + INTERFERENCE IMMUNITY
- 6: HIGHEST 'PEDESTRIAN/PARALLEL TRAFFIC' REJECTION + INTERFERENCE IMMUNITY

INFRARED PARAMETERS



FREQUENCY



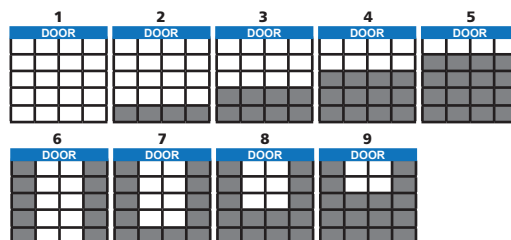
IR IMMUNITY



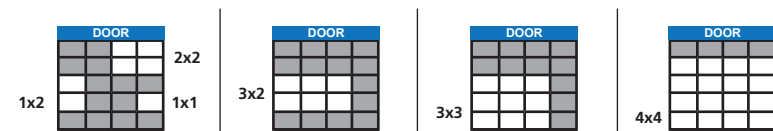
AUTOMATIC LEARN TIME



BE IR PATTERN SIZE



F2 IR TARGET SIZE



UNIVERSAL REMOTE CONTROL TIPS

- TO CHANGE OR QUESTION A PARAMETER, START BY PRESSING THE AND FINISH THE SESSION BY PRESSING
- TO QUESTION A PARAMETER, PRESS AFTER UNLOCKING AND CHOOSING A PARAMETER. COUNT THE LED FLASHES.
- CONSIDER USING AN ACCESS CODE TO SET AN ACCESS CODE:
 0-9 0-9 0-9 0-9
TO DELETE AN ACCESS CODE:
 0-9 0-9 0-9 0-9 0
- RELAY CONFIGURATION: 1-4
- FACTORY DEFAULTS: 9
- ALWAYS FINISH AN ADJUSTMENT SESSION BY LAUNCHING A SETUP: 0

LEARN TIME EXPLANATION

IF AN OBJECT IS IN THE PRESENCE DETECTION FIELD AND REMAINS MOTIONLESS FOR LONGER THAN THE PROGRAMMED LEARN TIME, THE SENSOR WILL ACCEPT THE OBJECT AS PART OF ITS BACKGROUND/REFERENCE POINT AND WILL DROP THE DETECTION SIGNAL.

****INFINITY (∞) WILL NEVER LEARN A NEW BACKGROUND****