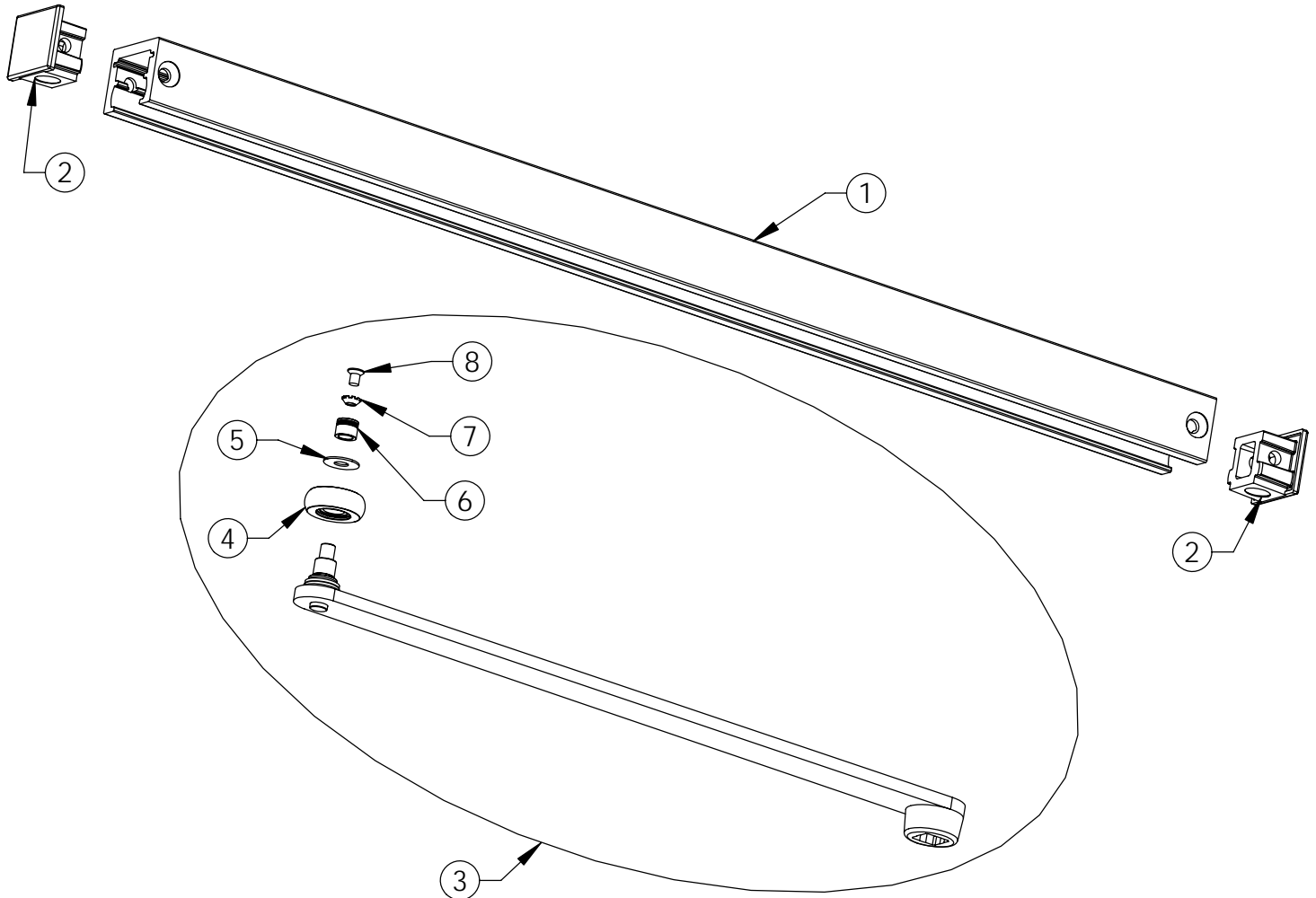


# 25-OTP POCKET APPLICATION ARM & TRACK ASSEMBLY

## PART LIST

PAGE NO. 29 REV A  
DATE: 9/15/05

-USE WITH 351 SERIES DOOR CLOSER ONLY-



ITEM	PART NO.	DESCRIPTION	QTY.
1	63-0157*	Channel	1
2	63-0682*	End Caps	2
3	63-3408*	Arm & Roller Assembly	1
4	63-3900	Roller Assembly	1
5	63-0687	Washer	1
6	63-0738	Bushing	1
7	01-0930	Countersunk Lock Washer	1
8	01-1028	Flat Head Machine Screw 8-32 x 5/16"	1
9	63-4212*	Mounting Screw Pack (Not Shown)	1

**\*MUST SPECIFY FINISH: (PAINT FINISHES EB,EN,ED,EP,EAB)**

**SARGENT®**

© SARGENT Manufacturing Company 2006