

SECONDARY LIGHTED KEYPAD

DoorKing Part Numbers

1506-081
Surface Mount

1506-091
Flush Mount

The secondary keypad is designed to work with the **1800, 1812 and 1830 series telephone entry systems OR 1504/1506 Stand Alone Keypad Entry Devices**. When connected to a telephone entry system or stand alone keypad, the secondary keypad provides momentary, continuous, and restricted entry codes to be accessed from a **second location**, and is typically installed on the inside of a door or gate area. Choose your desired installation, phone entry system 1598-010 (pages 1, 2, 3) or stand alone keypad 1599-010 (page 4).

DO NOT mount the secondary keypad to a moving gate, or immediately next to a gate panel or pedestrian gate. Continuous vibration from slamming gates and vibration can cause damage to the system over time.

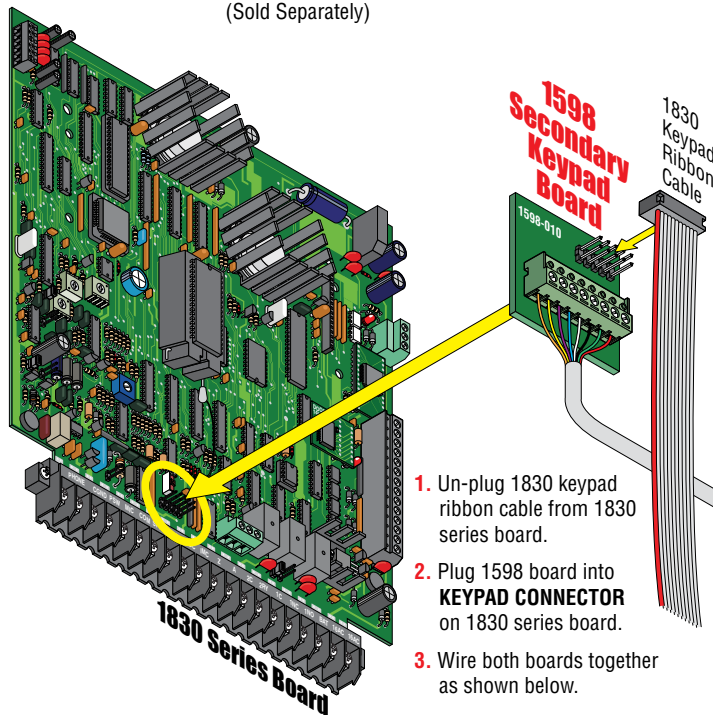
WARNING! If the keypad is used to activate a vehicular gate operator, it must be mounted a minimum of 6 feet away from the gate and gate operator, or in such a way that the user cannot come into contact with the gate or gate operator while using the device.

1830 Series Telephone Entry System Installation ONLY

ONLY the 1598-010 board can be used for the telephone entry systems. **DO NOT** use the 1599-010 board for the phone entry systems.

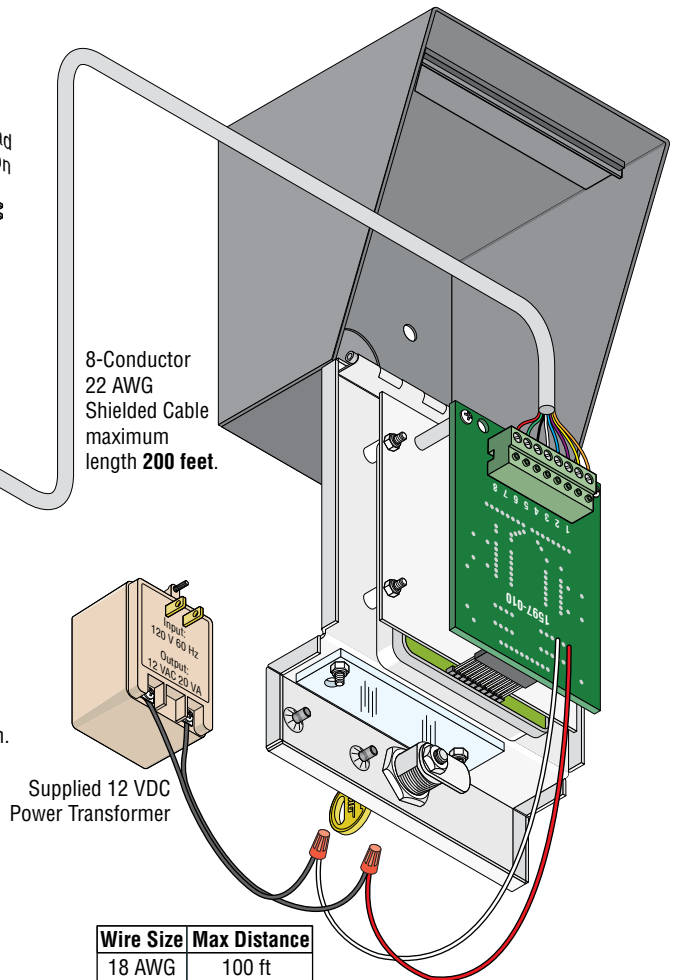
1830 Telephone Entry System Board

(Sold Separately)

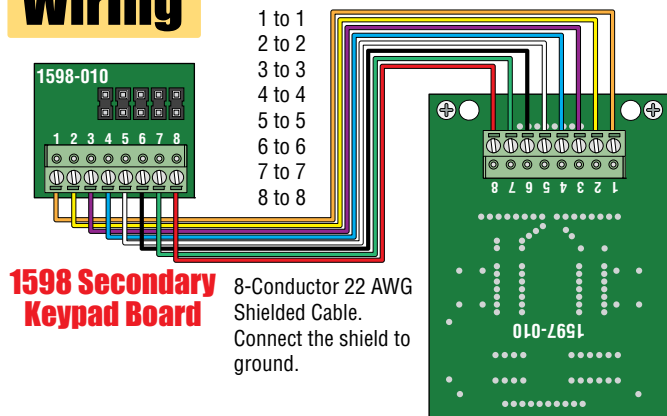


Secondary Lighted Keypad

Note: The secondary keypad has **NO** relays! Valid entry codes entered on the secondary keypad will activate the relays in the 1830 telephone entry system.



Wiring



1598 Secondary Keypad Board

Secondary Lighted Keypad

DOORS DOORING
120 S. Glasgow Avenue
Inglewood, California 90301 U.S.A.

DO NOT mount the secondary keypad to a moving gate, or immediately next to a gate panel or pedestrian gate. Continuous vibration from slamming gates and vibration can cause damage to the system over time.

DoorKing Part Numbers

1506-081
Surface Mount

1506-091
Flush Mount

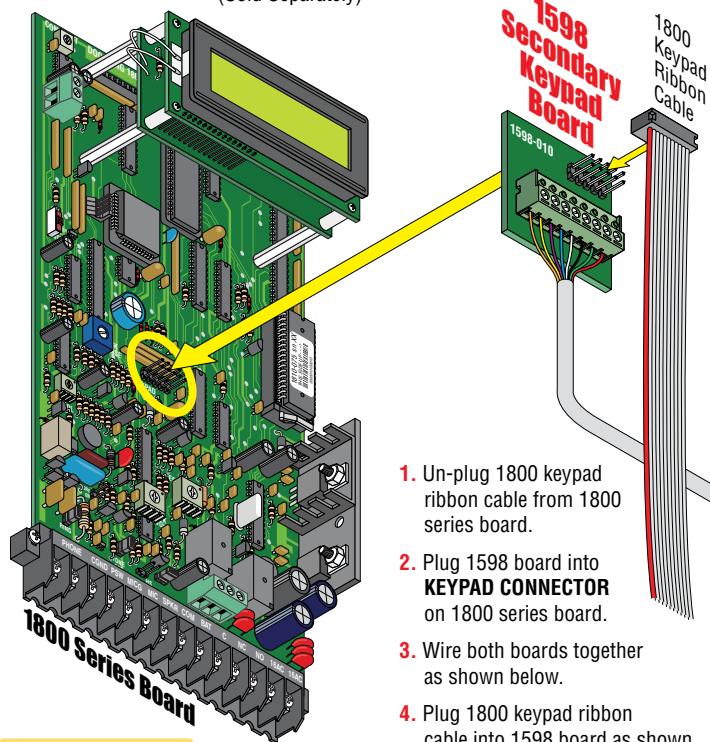
WARNING! If the keypad is used to activate a vehicular gate operator, it must be mounted a minimum of 6 feet away from the gate and gate operator, or in such a way that the user cannot come into contact with the gate or gate operator while using the device.

1800 Series Telephone Entry System Installations ONLY

ONLY the **1598-010** board can be used for the telephone entry systems.
DO NOT use the **1599-010** board for the phone entry systems.

1800 Telephone Entry System Board

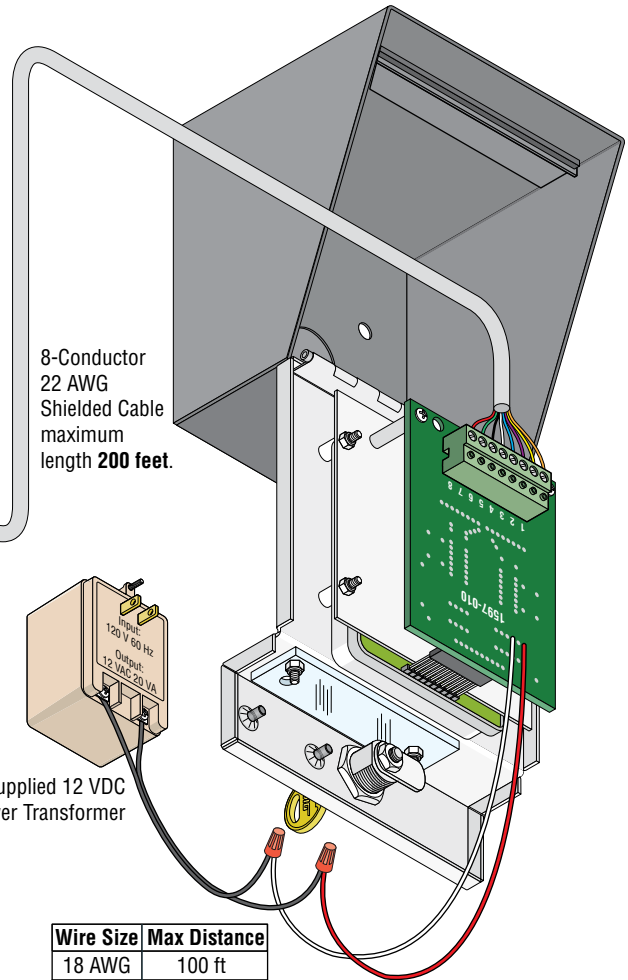
(Sold Separately)



1. Un-plug 1800 keypad ribbon cable from 1800 series board.
2. Plug 1598 board into **KEYPAD CONNECTOR** on 1800 series board.
3. Wire both boards together as shown below.
4. Plug 1800 keypad ribbon cable into 1598 board as shown.

Secondary Lighted Keypad

Note: The secondary keypad has **NO** relays!
Valid entry codes entered on the secondary keypad will activate the relays in the 1800 telephone entry system.



8-Conductor
22 AWG
Shielded Cable
maximum
length 200 feet.

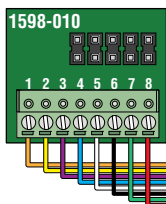
Supplied 12 VDC
Power Transformer

Wire Size	Max Distance
18 AWG	100 ft
16 AWG	200 ft

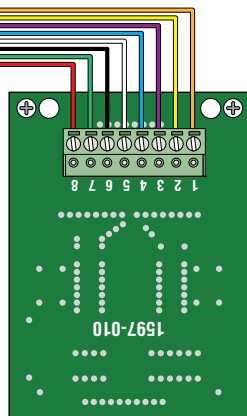
Connect Red and White wires to power transformer with supplied wire nuts.
Polarity does **NOT** matter

Wiring

- 1 to 1
- 2 to 2
- 3 to 3
- 4 to 4
- 5 to 5
- 6 to 6
- 7 to 7
- 8 to 8



8-Conductor 22 AWG
Shielded Cable.
Connect the shield to
ground.



Secondary Lighted Keypad

1598 Secondary Keypad Board

DO NOT mount the secondary keypad to a moving gate, or immediately next to a gate panel or pedestrian gate. Continuous vibration from slamming gates and vibration can cause damage to the system over time.

DoorKing Part Numbers

1506-081
Surface Mount

1506-091
Flush Mount

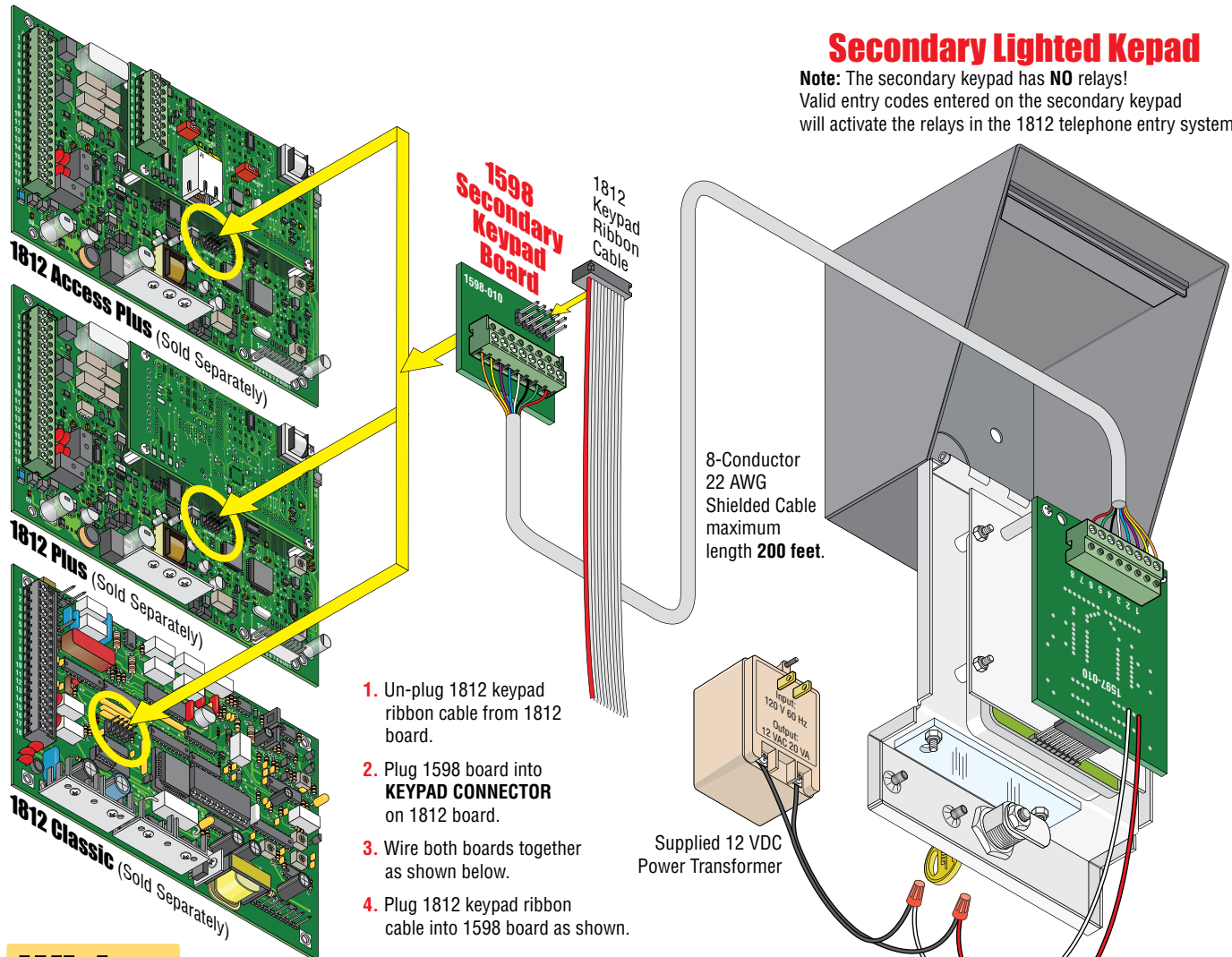
WARNING! If the keypad is used to activate a vehicular gate operator, it must be mounted a minimum of 6 feet away from the gate and gate operator, or in such a way that the user cannot come into contact with the gate or gate operator while using the device.

1812 Series Telephone Entry System Installations ONLY

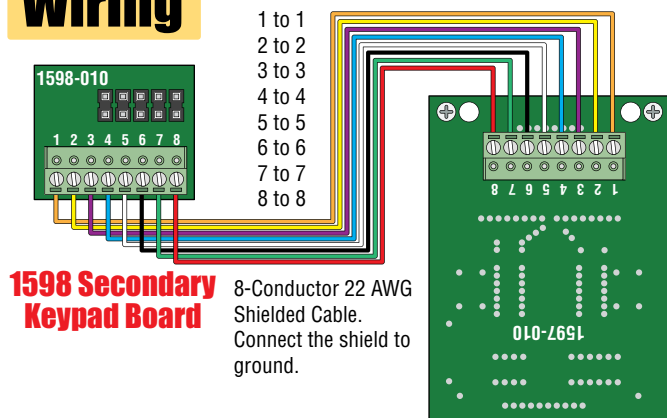
ONLY the **1598-010** board can be used for the telephone entry systems.
DO NOT use the **1599-010** board for the phone entry systems.

Secondary Lighted Keypad

Note: The secondary keypad has **NO** relays!
Valid entry codes entered on the secondary keypad will activate the relays in the 1812 telephone entry system.



Wiring



Wire Size	Max Distance
18 AWG	100 ft
16 AWG	200 ft

Connect Red and White wires to power transformer with supplied wire nuts.
Polarity does **NOT** matter

Secondary Lighted Keypad

DO NOT mount the secondary keypad to a moving gate, or immediately next to a gate panel or pedestrian gate. Continuous vibration from slamming gates and vibration can cause damage to the system over time.

DoorKing Part Numbers

1506-081
Surface Mount

1506-091
Flush Mount

WARNING! If the keypad is used to activate a vehicular gate operator, it must be mounted a minimum of 6 feet away from the gate and gate operator, or in such a way that the user cannot come into contact with the gate or gate operator while using the device.

Stand Alone Keypads Installation ONLY

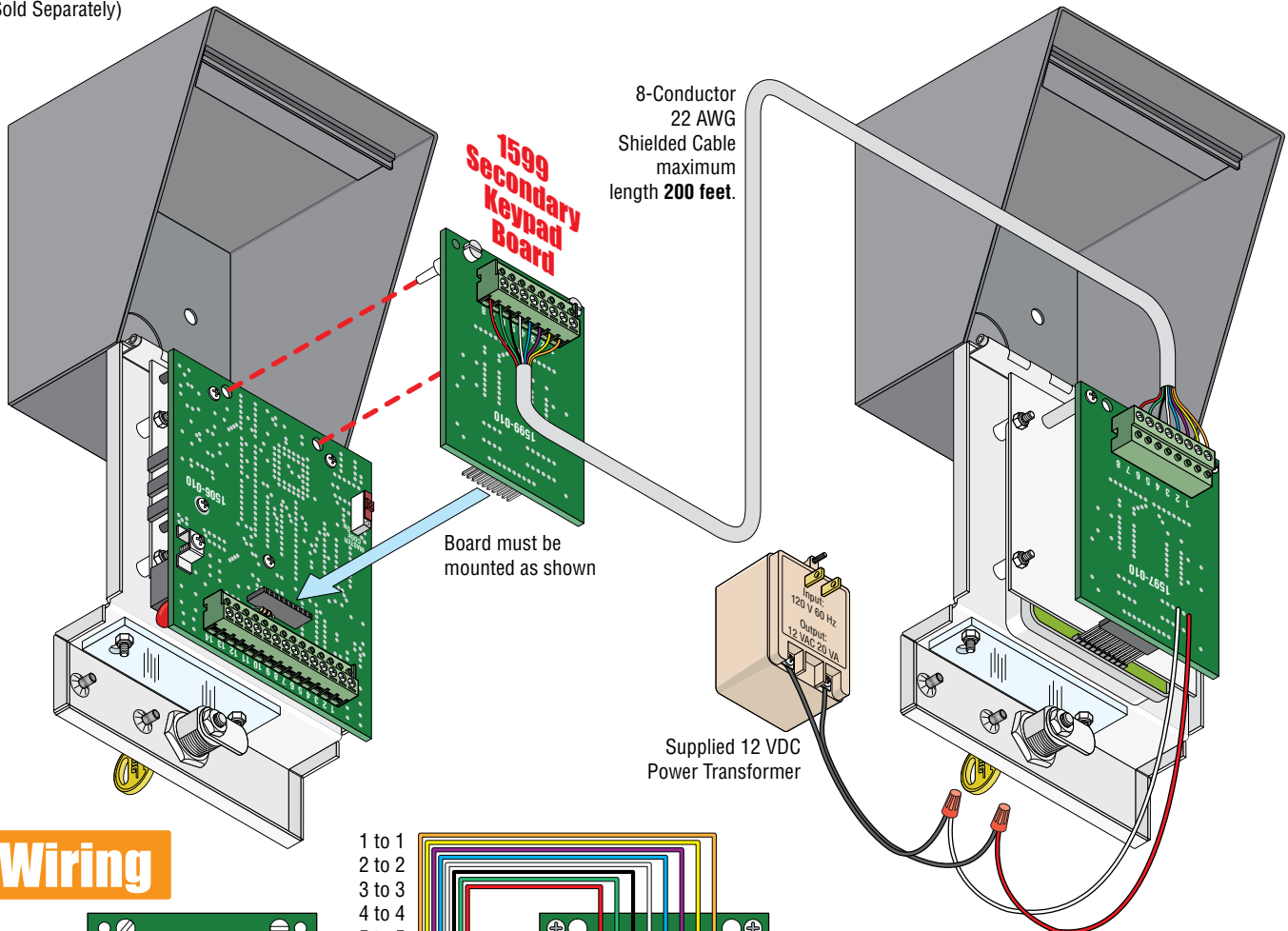
ONLY the **1599-010** board can be used for the 1504/1506 stand alone keypad entry devices.
DO NOT use the **1598-010** board for the stand alone keypads.

Secondary Lighted Keypad

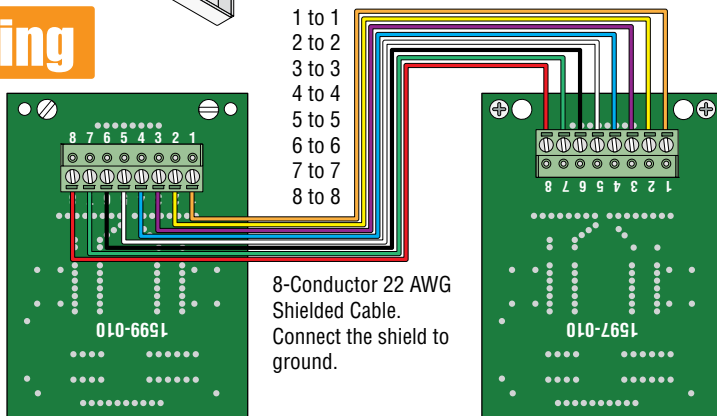
Note: The secondary keypad has **NO** relays!
Valid entry codes entered on the secondary keypad will activate the relays in the 1504/1506 keypads.

1504/1506 Stand Alone Keypad Entry Devices

(Sold Separately)



Wiring



1599 Secondary Keypad Board

Secondary Lighted Keypad

Wire Size	Max Distance
18 AWG	100 ft
16 AWG	200 ft

Connect Red and White wires to power transformer with supplied wire nuts.
Polarity does **NOT** matter



120 S. Glasgow Avenue
Inglewood, California 90301 U.S.A.