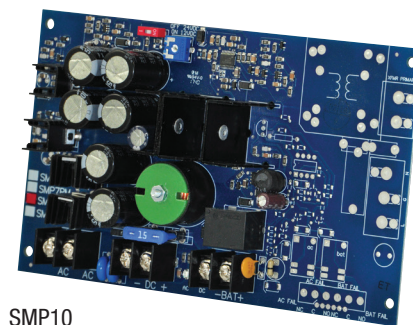


SMP10

Power Supply/Charger

Altronix SMP10 power supply/charger converts a low voltage AC input into a 12VDC or 24VDC output. This unit has a wide range of applications for access control, security, and CCTV system accessories that require additional power.



SMP10

Specifications

Input

Voltage 24VAC or 28VAC

Outputs

Output Voltage/Current	Required Input Voltage	Altronix Transformer
12VDC @ 10A	24VAC or 28VAC / 175VA	T2428175
24VDC @ 6A	28VAC / 175VA	T2428175
24VDC @ 10A	28VAC / 300VA	T2428300

Other Short circuit and thermal overload protection
Filtered and regulated

Back-up Battery *(not included)*

Type Sealed lead acid or gel type
Failover Upon AC loss, instantaneous

Indicators (LED)

Input Input voltage is present
DC Output Powered

Physical and Environmental

Dimensions (L x W x H)
7" x 4.25" x 1.25" (177.8mm x 107.9mm x 31.8mm).

Product Weight 0.55 lb. (0.25 kg)

Shipping Weight 0.7 lb. (0.32 kg)

Temperature

Operating 0°C to 49°C (32°F to 120°F)

Storage -20°C to 70°C (-4°F to 158°F)

Relative Humidity 85% +/-5%

BTU/Hr (approx.):

12VDC: 61 BTU/Hr.

24VDC: 123 BTU/Hr.

Mounting hardware included

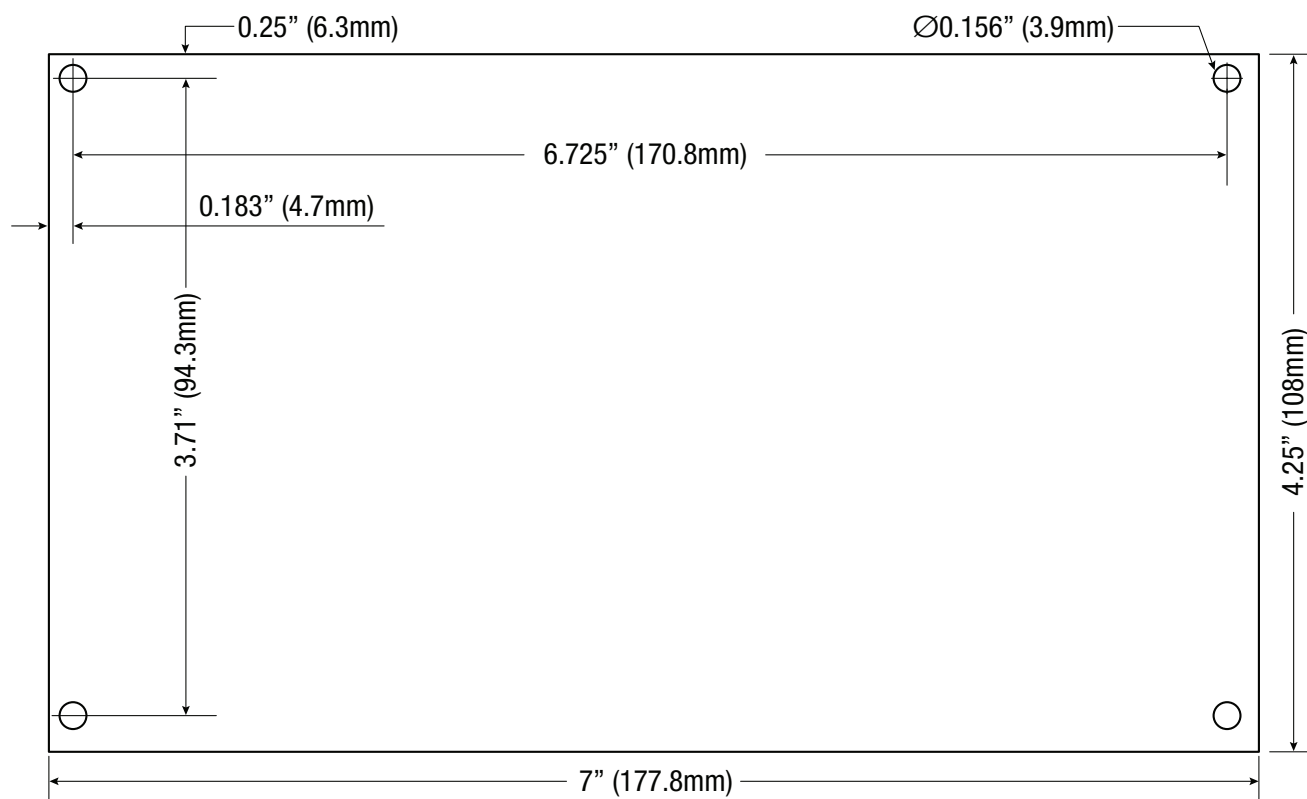
Lifetime Warranty

SMP10

Power Supply/Charger

Board Dimensions (L x W x H) and Drawing

7" x 4.25" x 1.25" (177.8mm x 108mm x 31.8mm)

**Lifetime Warranty**

Altronix Corporation | 140 58th St | Brooklyn, NY 11220 USA

phone: +1 718.567.8181 | fax: +1 718.567.9056 | email: info@altronix.com | www.altronix.com