



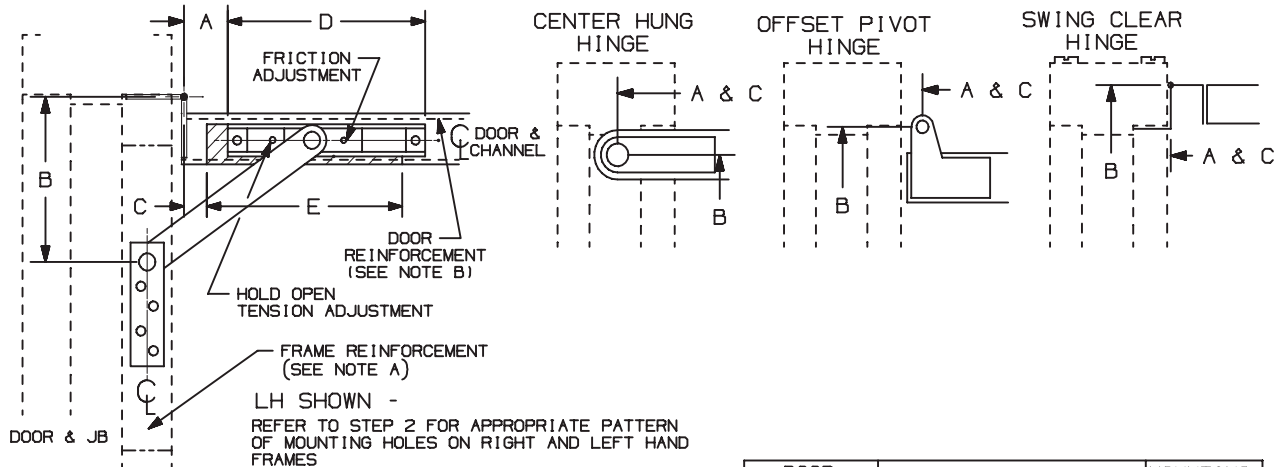
INST.100

Concealed Overhead Holder

Installation Instructions

OVERHEAD HOLDERS OR STOPS MUST BE INSTALLED BEFORE CLOSERS

- 1. A. DETERMINE THE MOUNTING BEING USED FROM ILLUSTRATION BELOW.
- B. SELECT MOUNTING GROUP NUMBER FROM THE CHART BELOW. MOST CONTINUOUS HINGES ARE GROUPED WITH 4 1/2" WIDE BUTT OR 4 1/2" SWING CLEAR HINGE.
- C. USING THE MOUNTING GROUP NUMBER AND THE OVERHEAD HOLDER OR STOP SIZE AND THE DEGREE OF OPENING DESIRED, FIND "A", "B", "C", "D", AND "E" DIMENSIONS FROM CHART ON PAGE 3. FOR DEAD STOP ADD 9/16"(14) TO THE "A" DIMENSION FROM THE CHART. SEE NOTE D FOR INFORMATION ABOUT DEAD STOP.



NOTES:

- A. HOLLOW METAL FRAMES SHOULD BE PROPERLY REINFORCED WITH A 3/16"(5) MINIMUM THICKNESS BY 12"(305) MINIMUM LENGTH PLATE.
- B. HOLLOW METAL DOORS SHOULD BE PROPERLY REINFORCED WITH A 3/16"(5) MINIMUM THICKNESS PLATE.
- C. STOP ONLY UNITS ARE PERMITTED ON MANY FIRE DOOR APPLICATIONS. HOWEVER, MECHANICAL HOLD-OPEN DEVICES THAT REQUIRE MANUAL RELEASE ARE NOT PERMITTED FOR USE ON ANY FIRE DOOR AS OUTLINED ON NFPA80 ® OR NFPA101 ®. CONTACT GLYNN-JOHNSON OR YOUR LOCAL REPRESENTATIVE FOR ASSISTANCE.
- D. DEAD STOP (DS) TEMPLATING MAY BE USED ON HOLD OPEN, FRICTION AND STOP ONLY MODELS, BUT SHOULD NOT BE USED ON "SE" MODELS. THE DS POSITION IS REACHED WHEN THE SHOCK SPRING IS FULLY COMPRESSED. WHEN DS TEMPLATING IS USED, THE INITIAL DEGREE OF STOP WILL BE 5° -7° LESS THAN THE DS OPENING. FOR USE ON DOORS OPENING BACK-TO-BACK, AGAINST A WALL OR OBSTRUCTION.

100 ADJUSTMENTS:

HOLD-OPEN TENSION ADJUSTMENT (HOLD-OPEN UNIT ONLY)- USING A 1/8" BALL END ALLEN WRENCH, TURN SCREW SHOWN IN BOTTOM OF CHANNEL CLOCKWISE TO INCREASE HOLD-OPEN TENSION AND COUNTERCLOCKWISE TO DECREASE HOLD-OPEN TENSION.

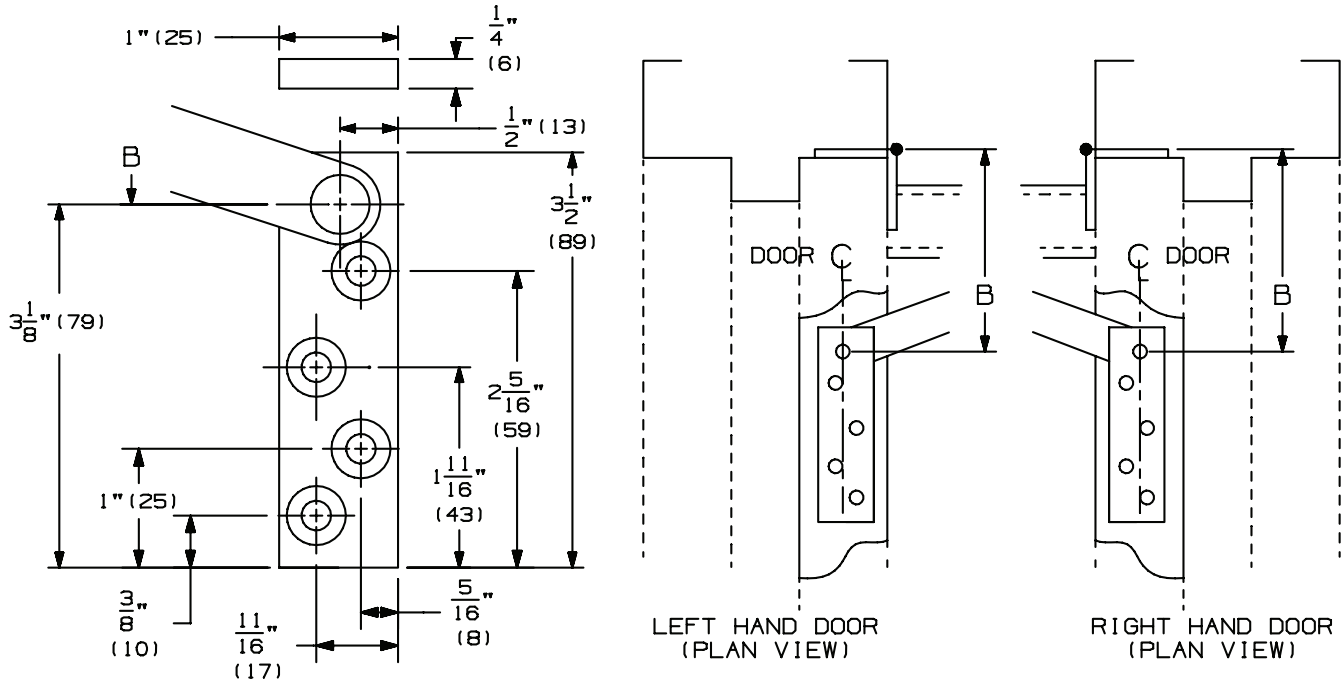
FRICTION TENSION ADJUSTMENT (FRICTION UNIT ONLY)- USING A 1/8" ALLEN WRENCH, HOLD SCREW SHOWN IN PLACE WHILE USING A 7/16" WRENCH TO TURN JAMB NUT COUNTERCLOCKWISE UNTIL LOOSE. TURN SCREW CLOCKWISE TO INCREASE FRICTION TENSION AND TURN COUNTERCLOCKWISE TO DECREASE THE FRICTION TENSION. WHILE HOLDING THE SCREW IN PLACE, TURN THE JAMB NUT CLOCKWISE UNTIL TIGHT.

DIMENSIONS IN ( ) ARE IN MILLIMETERS

DOOR THICKNESS	HINGE TYPE & STYLE	MOUNTING GROUP
1 3/4" (44mm)	4" WIDE BUTT	2
	4 1/2" WIDE BUTT	2
	5" WIDE BUTT	1
	3/4" OFFSET PIVOT	2
	4" SWINGCLEAR	1
	4 1/2" SWINGCLEAR	2
	5" SWINGCLEAR	2
2" (51mm)	CENTERHUNG PIVOT	3
	4 1/2" WIDE BUTT	2
	5" WIDE BUTT	1
	3/4" OFFSET PIVOT	1
	4 1/2" SWINGCLEAR	2
	5" SWINGCLEAR	2
2 1/4" (57mm)	SOSS 220	2
	CENTERHUNG PIVOT	3
	4 1/2" WIDE BUTT	2
	5" WIDE BUTT	1
	3/4" OFFSET PIVOT	1
	4 1/2" SWINGCLEAR	1
2 1/4" (57mm)	5" SWINGCLEAR	1
	SOSS 220	2
	CENTERHUNG PIVOT	3

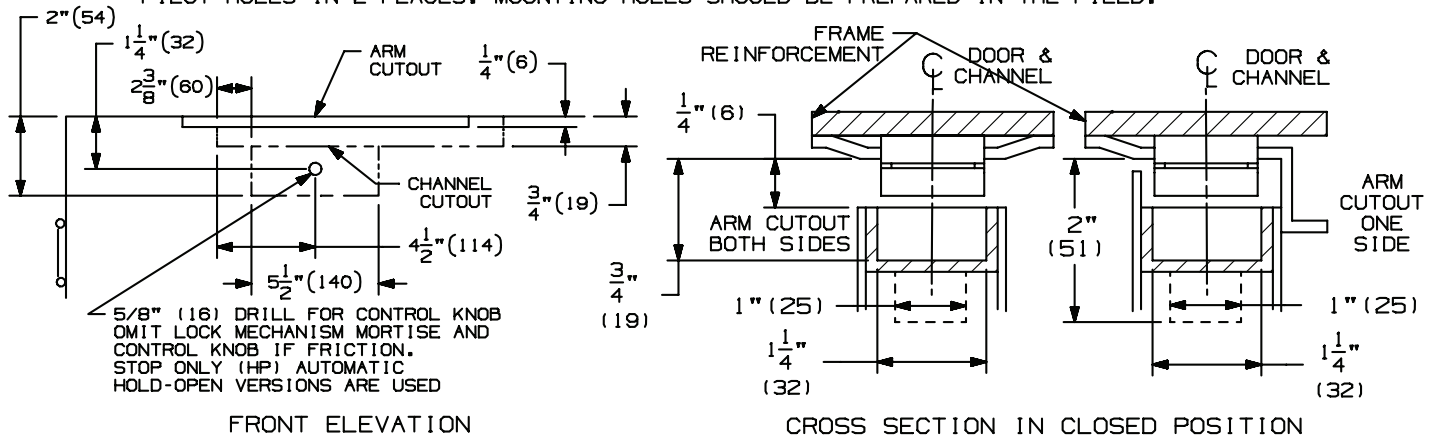
SCREW DETAILS			
	QTY	WOOD	METAL
DOOR	2	#18 x 3" PPHWS	5/16"-18 x 1 1/2" PPHMS
JAMB	4	#14 x 1 1/2" FPHSMS	1/4"-20 x 3/4" FPHMS

2. A. LOCATE "B" DIMENSION ON THE FRAME. NOTE THAT THE "B" DIMENSION IS MEASURED FROM THE CENTERLINE OF THE HINGE AS SHOWN.
- B. MORTISE FOR THE JAMB BRACKET AS SHOWN. REFER TO LEFT AND RIGHT HAND PLAN VIEWS FOR APPROPRIATE HOLE PATTERN.
- C. FOR METAL FRAMES, USE A #7 DRILL AND A 1/4"-20 TAP IN 4 PLACES. FOR WOOD FRAMES, DRILL 3/16" PILOT HOLE IN 4 PLACES.



REFER TO ILLUSTRATION BELOW AND ON SHT 1 FOR THE FOLLOWING NOTES:

3. A. LOCATE "A" AND "D" DIMENSIONS ON THE CENTERLINE OF THE DOOR. NOTE THAT THE "A" DIMENSION IS MEASURED FROM THE CENTERLINE OF THE HINGE AS SHOWN.
- B. MORTISE FOR THE CHANNEL AS SHOWN IF REQUIRED. FOR 100H HOLD-OPEN VERSION, MORTISE FOR HOLD-OPEN LOCK MECHANISM AND DRILL 5/8" (16) DIAMETER HOLE FOR CONTROL KNOB AS SHOWN. (WHEN HP HOLD-OPEN, F FRICTION OR S STOP UNIT IS SUPPLIED, ADDITIONAL MORTISE FOR HOLD-OPEN MECHANISM AND CONTROL KNOB ARE NOT REQUIRED.)
- C. LOCATE "C" AND "E" DIMENSIONS ON THE TOP OF THE DOOR. NOTE THAT THE "C" DIMENSION IS MEASURED FROM THE CENTERLINE OF THE HINGE AS SHOWN.
- D. MORTISE FOR ARM CUTOUT AS SHOWN.
- E. FOR METAL DOORS, USE A F DRILL AND 5/16-18 TAP IN 2 PLACES. FOR WOOD DOORS, DRILL 1/4" PILOT HOLES IN 2 PLACES. MOUNTING HOLES SHOULD BE PREPARED IN THE FIELD.



4. A. INSTALL THE CHANNEL IN THE DOOR WITH THE SHOCK SPRING TOWARDS THE HINGE EDGE OF DOOR.
- B. INSTALL JAMB BRACKET IN FRAME.
- C. FOR 100H HOLD-OPEN VERSION ONLY, EPOXY (NOT PROVIDED) EYELET IN 5/8" (16) HOLE.
- D. FOR 100H HOLD-OPEN VERSION ONLY, PLACE SERRATED KNOB AND KNOB SPACER OVER CAP SCREW AS SHOWN. THREAD ASSEMBLY THROUGH 5/8" (16) HOLE IN DOOR ONTO LOCK.

DIMENSIONS IN ( ) ARE IN MILLIMETERS

# MOUNTING GROUPS 1, 2 & 3 100 SERIES CONCEALED OVERHEAD STOP & HOLDER

CAUTION: "A", "B", & "C" DIMENSIONS ARE MEASURED FROM THE CENTERLINE OF PIVOT, NOT EDGE OF DOOR

DIN, DOOR OPENING	65 HO			90 HO			95 HO			100 HO			105 HO			110 HO			I	
	A	B	C	A	B	C	A	B	C	A	B	C	A	B	C	A	B	C		
101 mm 18-23 #1 457-584 *	59	87	0	52	81	0	14	17/8	3	0	349	-	-	-	-	-	-	-	14 3/8	10
102 mm 23 1/16-27 * 595-686 *	108	114	51	100	105	44	394	3 1/16	1 1/4	1 1/4	394	3 7/16	3 11/16	1 1/4	15 1/2	-	-	-	15 1/2	12
103 mm 27 1/16-33 687-838	202	143	108	177	178	4 1/4	454	3 7/8	7 1/8	3 9/16	454	17 7/8	6 15/16	3 1/8	18*	6 1/2*	4 3/16*	2 11/16*	18*	400
104 mm 33 1/16-39 839-991	225	168	133	297	156	121	562	4 3/4	11 5/16	5 13/16	4 7/16	22 1/4	10 3/4	5 1/8	3 5/8	22 1/4	10 1/2	4 15/16	3 7/16	20
105 mm 39 1/16-45 992-1143	457	214	179	443	200	165	714	6 1/2	28 1/8	17	7 1/8	16 9/16	16 3/16	6 9/16	5 1/16	28 1/4	15 7/8	4 13/16	28 1/4	26
106 mm 45 1/16-54 1144-1372	610	246	211	594	229	194	867	8 1/2	34 1/8	22 3/8	8 1/2	22 5/8	21 7/8	7 9/16	6 1/16	34 1/4	21 7/8	5 11/16	34 1/4	32
101 mm 18-23 #1 457-584 *	65	84	0	59	87	0	368	3 7/16	0	14	356	1 15/16	3 0	0	349	-	-	-	14 3/8	10
102 mm 23 1/16-27 * 595-686 *	113	117	51	105	111	44	400	4 1/8	4 3/8	4 1/16	400	3 11/16	3 15/16	1 1/4	15 3/4	3 1/2	3 11/16	1	15 3/4	12
103 mm 27 1/16-33 687-838	206	148	113	454	197	138	454	5 7/16	17 7/8	3 3/4	454	17 7/8	4 13/16	3 5/16*	18*	6 1/2*	4 3/16*	2 7/8*	18*	400
104 mm 33 1/16-39 839-991	225	173	138	302	160	125	562	6 5/16	15 1/2	6	559	11 1/2	10 7/8	5 1/16	3 7/8	22 1/8	10 5/8	5 1/8	3 5/8	20
105 mm 39 1/16-45 992-1143	464	221	186	714	206	171	711	6 3/4	28 1/8	17 1/8	7 1/8	28 1/8	16 3/8	6 3/4	5 1/4	28 1/4	16 3/8	6 1/2	28 1/8	26
106 mm 45 1/16-54 1144-1372	610	249	214	597	235	200	864	7 1/2	34 1/4	23	864	22 1/2	22 1/16	6 5/8	34 1/4	21 11/16	7 5/16	5 13/16	34 1/4	32
101 mm 18-23 #1 457-584 *	-	-	-	-	-	-	-	-	-	-	-	-	-	-	-	-	-	-	-	10
102 mm 23 1/16-27 * 595-686 *	-	-	-	-	-	-	-	-	-	-	-	-	-	-	-	-	-	-	-	12
103 mm 33 1/16-39 839-991	225	168	133	297	156	121	562	4 3/4	11 5/16	5 13/16	4 7/16	22 1/4	10 3/4	5 1/8	3 5/8	22 1/4	10 1/2	4 15/16	3 7/16	20
104 mm 39 1/16-45 992-1143	457	214	179	443	200	165	714	6 1/2	28 1/8	17	7 1/8	16 9/16	16 3/16	6 9/16	5 1/16	28 1/4	15 7/8	4 13/16	28 1/4	26
105 mm 45 1/16-54 1144-1285	610	240	205	488	225	191	714	8 1/8	34 1/8	23 3/4	867	23 1/4	22 3/4	8 7/16	6 15/16	34 3/8	22 3/8	7 15/16	6 7/16	32
106 mm 1296-1448	637	273	238	867	254	219	867	6 1/8	603	238	203	238	591	224	186	870	568	202	164	813

NOTE: DIMENSIONS IN ( ) ARE MILLIMETERS.

\* NOT TO BE USED WITH OFFSET PIVOTS / NOT TO BE USED WITH SWINGCLEAR HINGES

FOR DEAD STOP ADD 9/16" (14) TO THE "A" DIMENSION

FOR SE STOPS USE HOLD-OPEN MOUNTING DIMENSIONS

HO-HOLD-OPEN FOR HOLDERS, OPENING FOR STOPS

I = ARM LENGTH FROM PIVOT CENTERLINE TO PIVOT CENTERLINE (FOR REFERENCE ONLY)

INST.100



**Customer Service**

1-877-671-7011

[www.allegion.com](http://www.allegion.com)



© Allegion 2014  
Printed in U.S.A.  
INST.100 Rev. 01/14-b